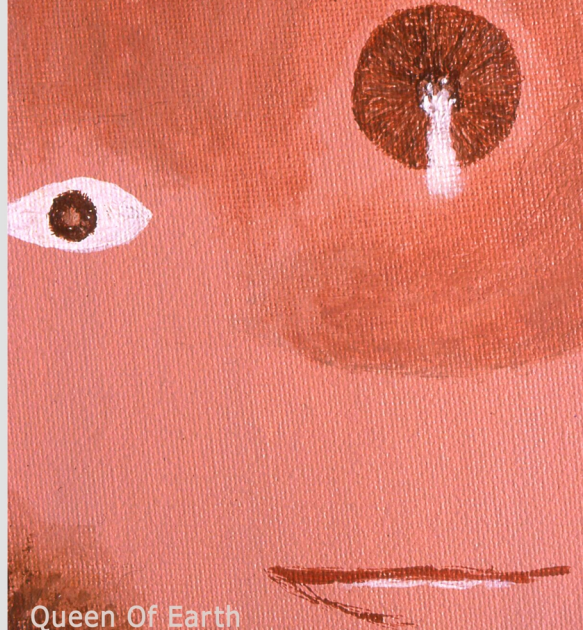




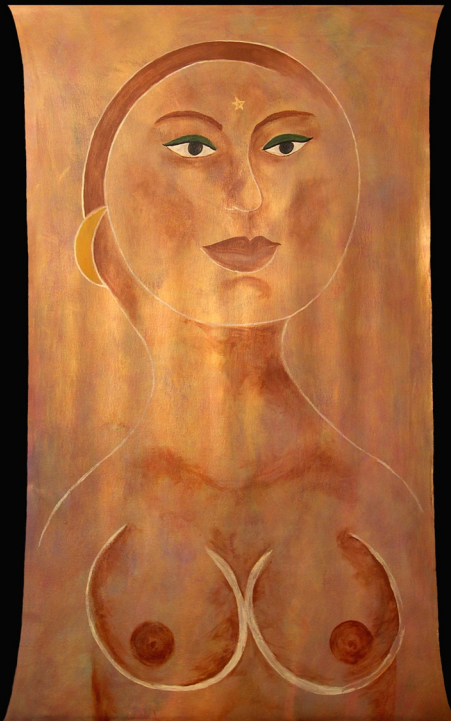
Queen Of Air
A vibrant woman
dressed in mourning.

"Woman On Main Street" 24in. X 22in.



Queen Of Earth
A magnificent woman – confident,
perceptive, generous – or an
untrustworthy man. "Poem #1" 8in. x 6in.

Spirit Hill Tarot (C) 2005 Stone Riley Print Sheet # 13



Queen
Of Fire
Patroness of female honor and human
family warmth. "Lady Of The Witches" 70in. X 43in.



Queen Of Water
Fear this voice and despair,
welcome it and learn.

"Gorgon" (detail) Approx. 24in. X 20in.