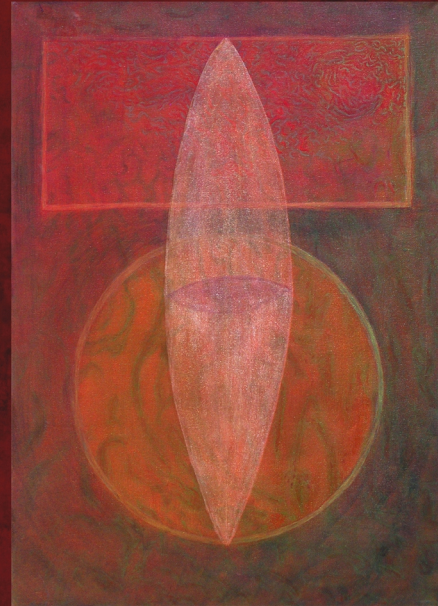




Nine Of Air Despair and misery, for all seems lost.  
"Catherine The Great" 36in. X 24in.

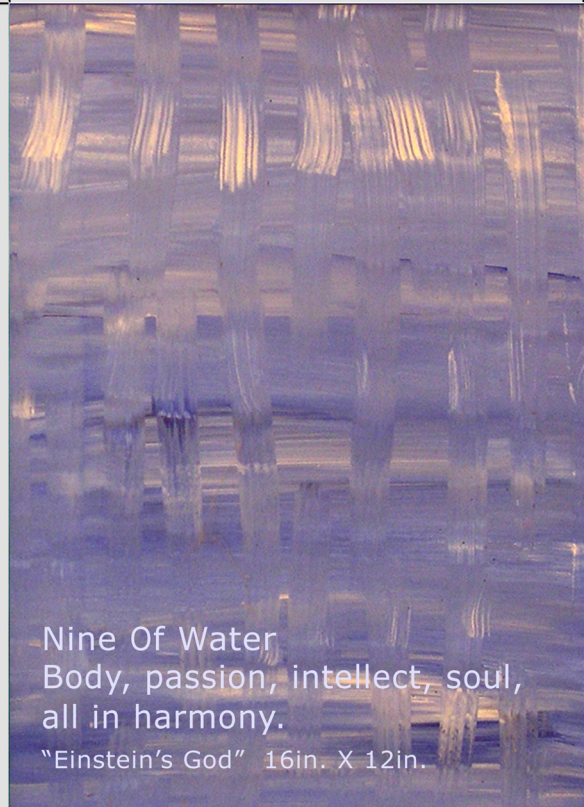


Nine Financial security, "Mycenae"  
Of accomplishments, 30in.  
Earth certainty. X 24in.

Spirit Hill Tarot (C) 2005 Stone Riley Print Sheet #09



Nine Of Fire  
Life, subtle and vigorous,  
denies all obstacles.  
"Poppy" 24in. X 36in.



Nine Of Water  
Body, passion, intellect, soul,  
all in harmony.  
"Einstein's God" 16in. X 12in.