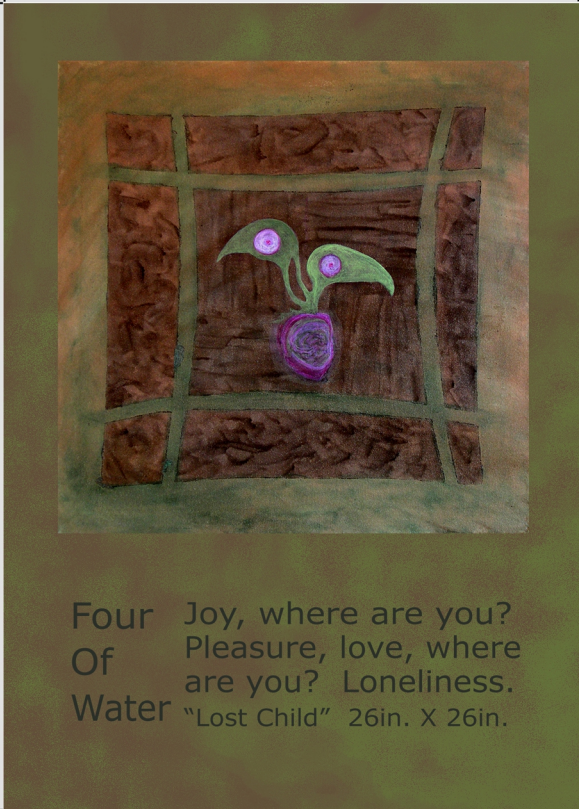
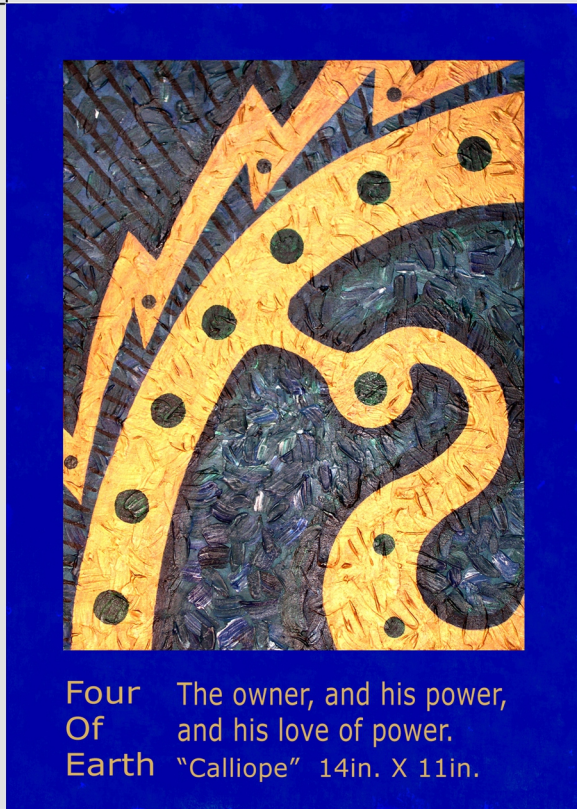


Four Of Air  
Power regains itself in exile.  
"Phoenix" 20in. X 16in.



Four Of Water  
Joy, where are you?  
Pleasure, love, where  
are you? Loneliness.  
"Lost Child" 26in. X 26in.

Spirit Hill Tarot (C) 2005 Stone Riley Print Sheet # 04



Four Of Earth  
The owner, and his power,  
and his love of power.  
"Calliope" 14in. X 11in.



Four Of Fire  
Competence so perfect  
it seems like a natural flow.  
"Chop Wood, Carry Water" 14in. x 14in.